

# Removing UiPath Community Edition and Installing Academic Alliance Edition

## About UiPath Academic Alliance Edition

The UiPath Academic Alliance offers to its partner universities the opportunity to use the UiPath software at no charge through a dedicated Academic Alliance license, which is offered for free to students and educators alike, for teaching, learning and research.

- The license entitles the user to access UiPath Studio, the automation development software application, along with the UiPath Attended Robot to allow for testing and execution of the automations.
- One license key allows 2 UiPath Studio software activations on 2 different machines (to allow for software usage on both university-provided and personal laptops).
- The license type granted is Named User, to be applied solely to User Mode installs. Instructions for activating the Academic Alliance Edition license will be provided accordingly.
- Each Academic Alliance Edition license expires after 365 days upon its activation.

UiPath Academic Alliance Edition helps you create the robots from scratch. The 40-hour theory component and 20-hour labs component of the *RPA Design and Development* course is built on the Academic Alliance Edition software. Educators and students can download the software for free and use it to conduct academic research.

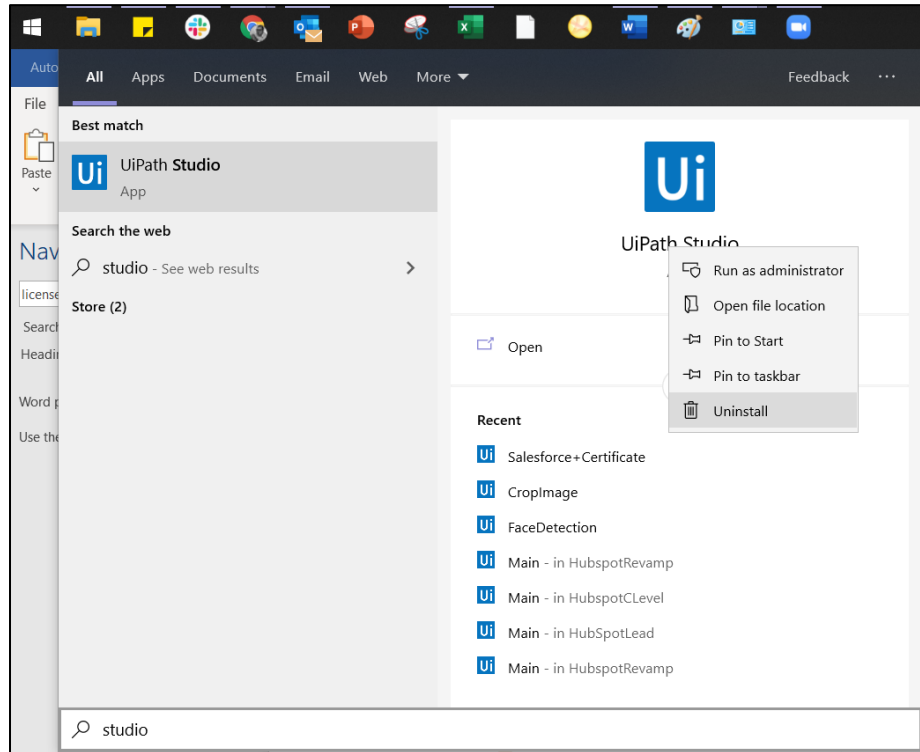
Using the Academic Alliance Edition ensures that you have the appropriate software version installed which aligns with the curriculum and hands-on lab materials. This will avoid any disruptions to your learning experience.

**If you have installed Community Edition previously, please follow [Step 1](#) below to first remove it before installing Academic Alliance Edition. Failure to do this may result in both editions of the software not working correctly.**

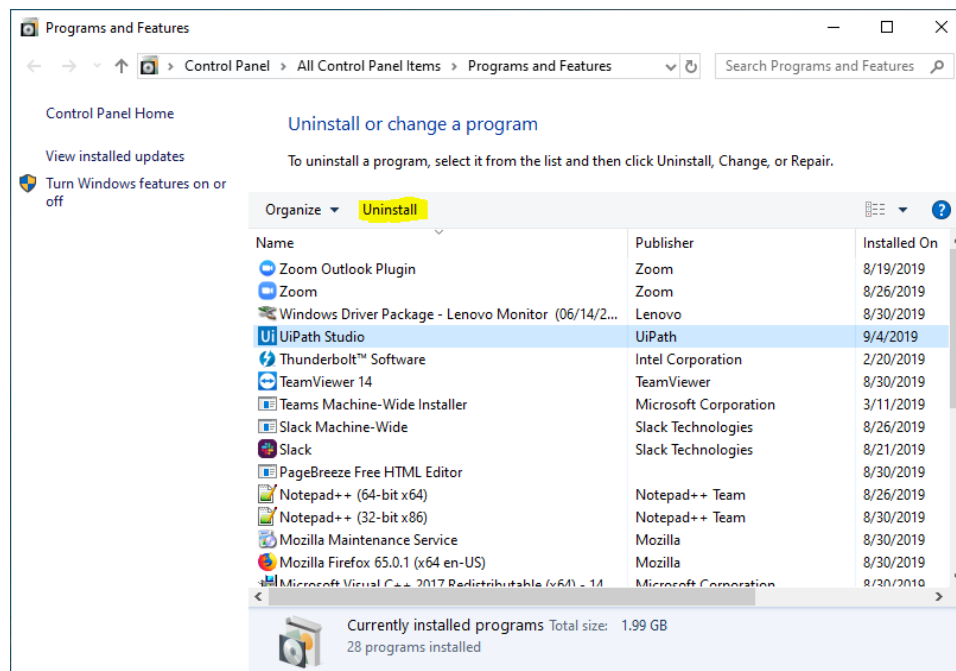
If you are installing UiPath software for the first time, skip to [Step 2](#) to download Academic Alliance Edition.

## Step 1. Uninstall UiPath Community Edition

1. In the Start menu, search for the “UiPath Studio” app, and select **Uninstall**.



2. In the Programs and Features window, select **UiPath Studio** and click **Uninstall**.



## Step 2. Download and Install UiPath Academic Alliance Edition

1. To download your free copy of UiPath software, open the URL: [www.uipath.com/academic-alliance-sw](http://www.uipath.com/academic-alliance-sw). It is a private form designated only for the students and educators who belong to the Academic Alliance partner institutions.
2. Fill in your contact details and choose the institution you belong to. You will receive a link to download the software by email.

**START YOUR AUTOMATION JOURNEY**

### UiPath Academic Alliance prepares you with automation skills for a lifetime

- Download the fully featured UiPath Academic Alliance Edition
- Free for students and educators enrolled in the UiPath Academic Alliance RPA classes

**Thank you for your interest in the UiPath Academic Alliance!**

To start your journey, download UiPath Academic Alliance Edition from this page. It's dedicated to students and educators, is free, and comes with support via the Community Forum, Guides, and other Resources. Please note, the Academic Alliance Edition does not come with phone or email support.

Your school / institution has agreed to licensing terms as part of the Academic Alliance agreement.

If you are an educator and don't find your school in the drop-down list, please quickly fill in this form and a member of our team will get back to you.

If you are a student enrolled in school which is not yet offering Robotic Process Automation (RPA) classes, you may still access the Community Edition for free here and UiPath Academy here.

Fill in the form to get your copy:

FIRST NAME\*      LAST NAME\*

EMAIL\*

ACADEMIC ROLE\*

STUDENT

EDUCATOR

COUNTRY/REGION\*

United States

YOUR ACADEMIC INSTITUTION/ COLLEGE/ UNIVERSITY

United States - Indiana University

FIELD OF STUDY\*

Education

RPA COURSE START      RPA COURSE END

2019-09-30      2019-12-30

TWITTER USERNAME      FACEBOOK PROFILE URL      LINKEDIN PROFILE URL

I would like to receive communications about UiPath tailored to my interests and preferences, including latest news about products, services, events and promotions. For more information, please see our [Privacy Policy](#)

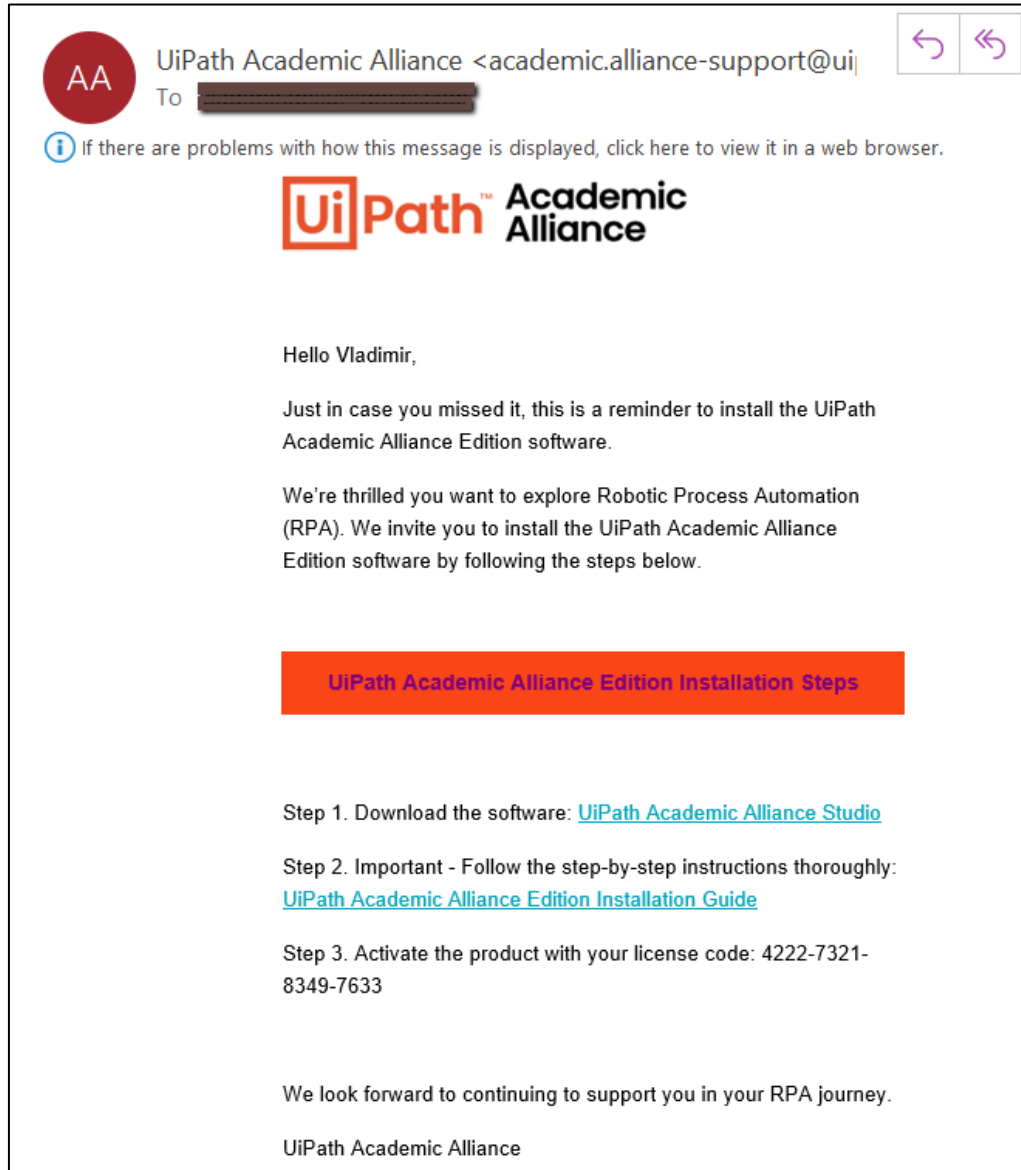
I declare that I have read and I agree with the [License Agreement\\*](#)

**Request Academic Alliance Edition**

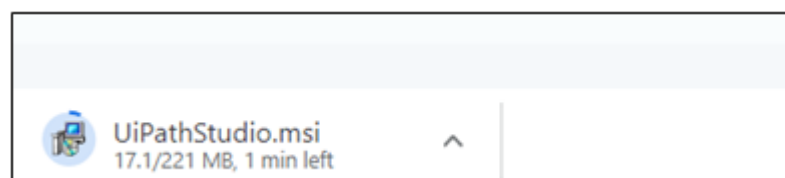
3. Click **Request Academic Alliance Edition**. Then, check your email.

The email you receive contains the installation guide, the link to download the *UiPathStudio.msi* file along with your dedicated license key.

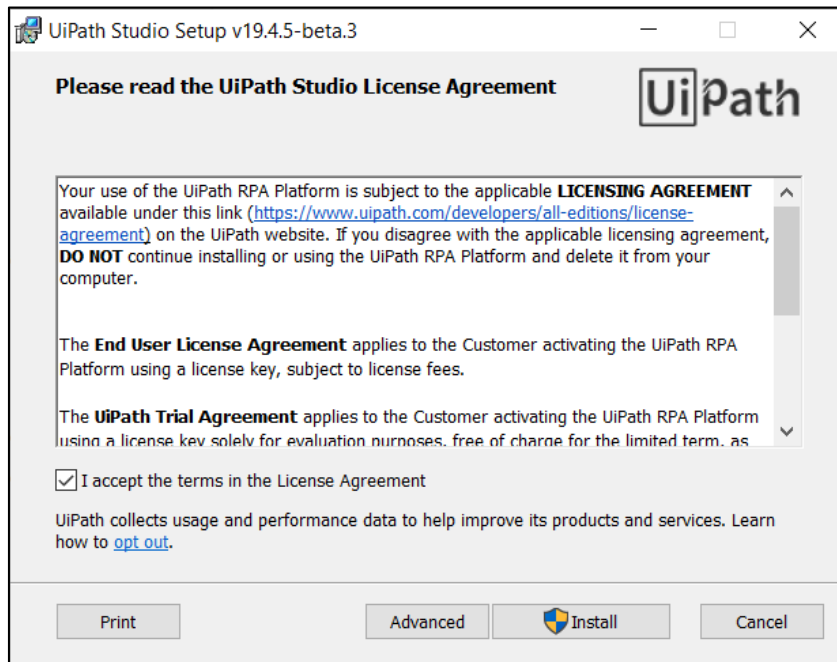
**Make sure you follow the steps in the email and carefully follow this guide.**



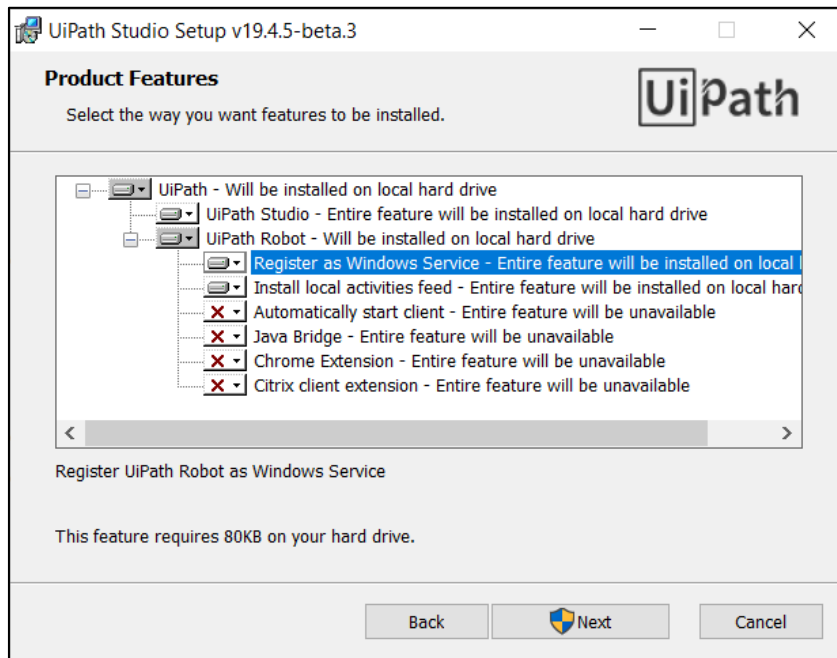
4. The file will begin downloading. Click to open the **UiPathStudio.msi** once it is downloaded.



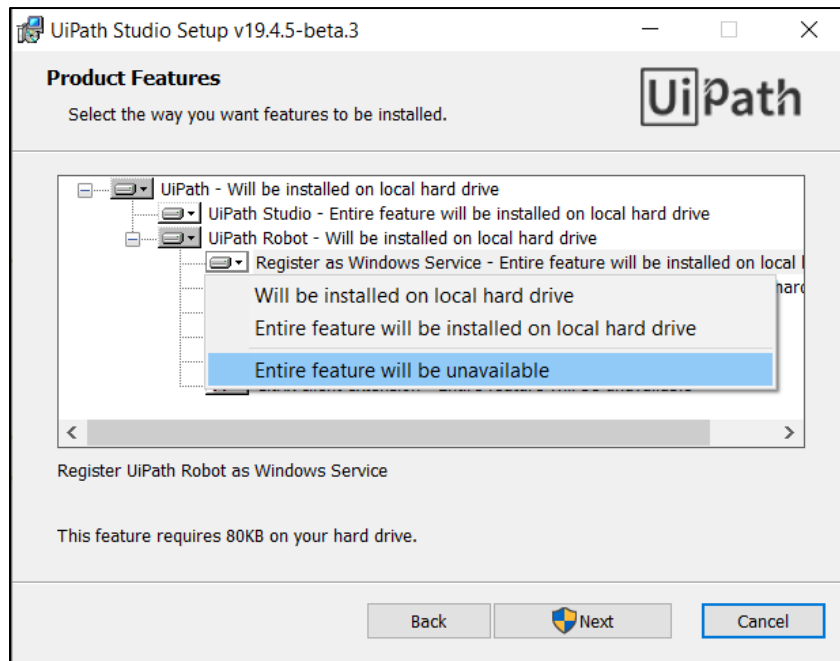
5. Accept the terms of the *UiPath Studio License Agreement* and click **Advanced**.



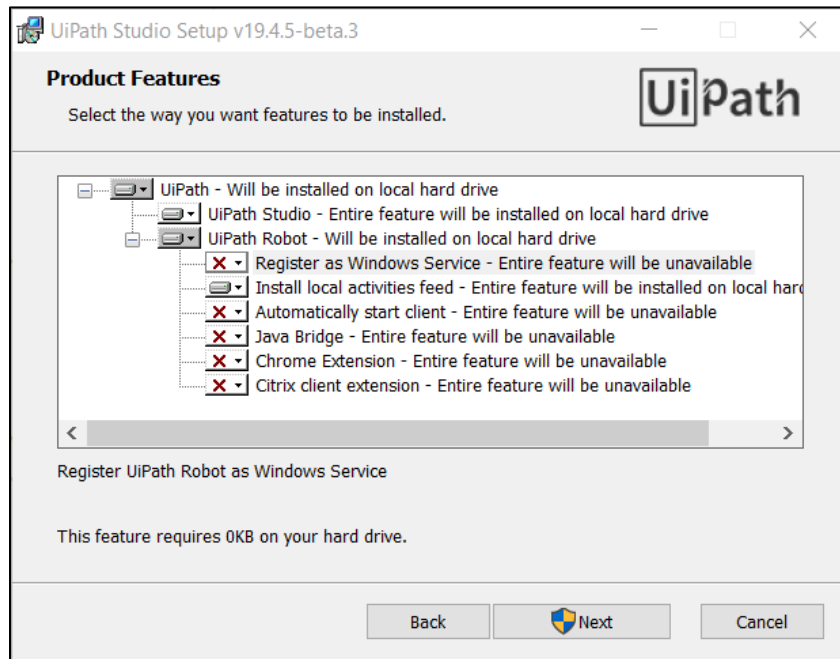
6. **\*\*\*IMPORTANT\*\*\*** Make sure the *Register as Windows Service* option is deselected. To do this, click **Register as Windows Service**.



7. Select **Entire feature will be unavailable**.

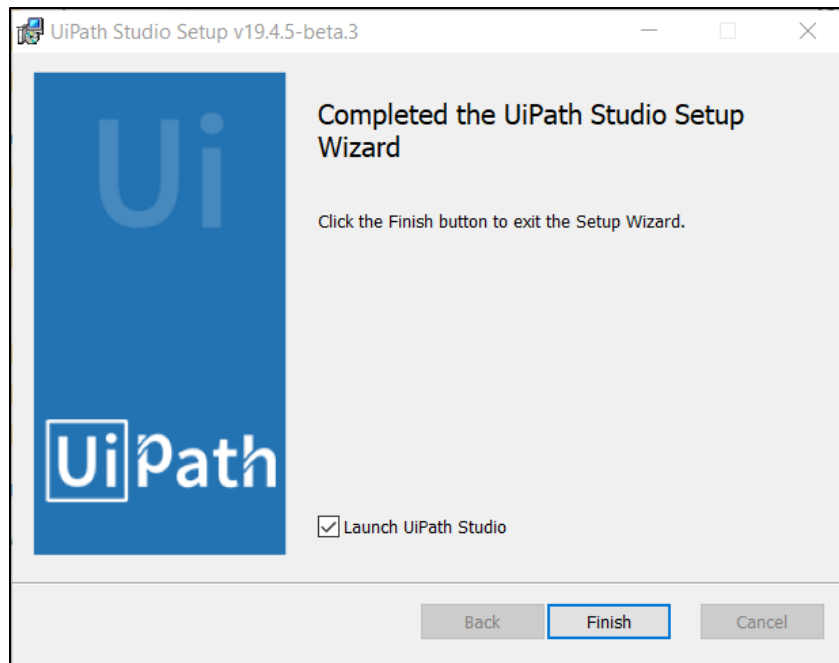


8. Verify that the *Register as Windows Service* option appears deselected.



**NOTE** - If you don't deselect the *Register as Windows Service* option as shown above, then you will need to re-install the MSI package again. When you do so, remember to deselect the *Register as Windows Service* option.

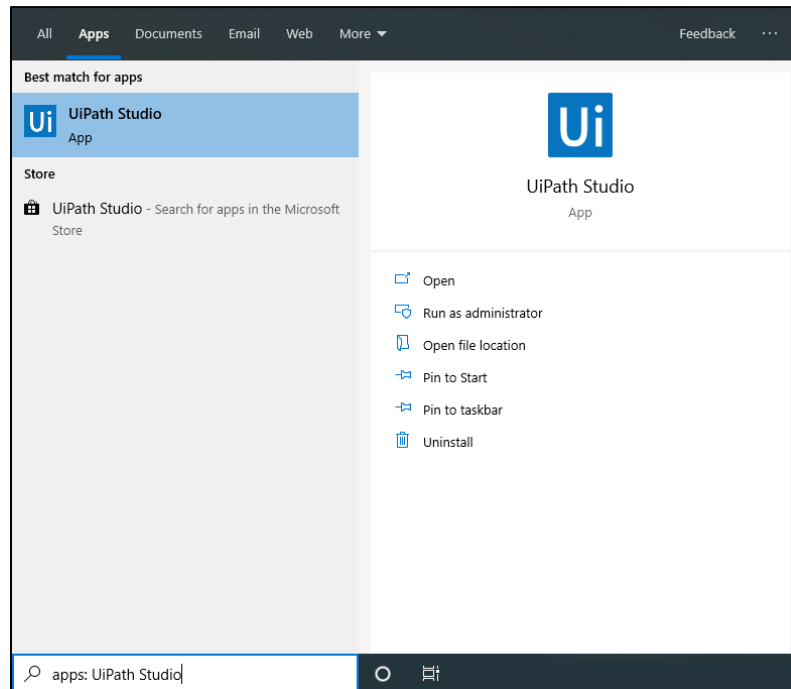
9. Click **Next** to continue and then **Install** to begin the installation.



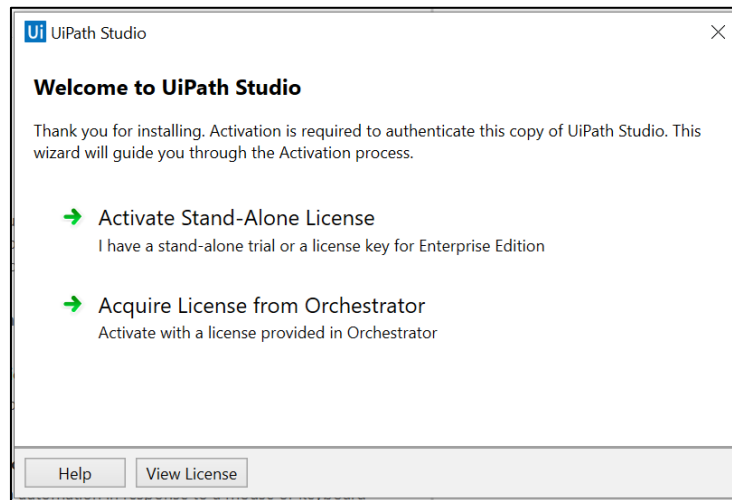
10. Click **Finish**.

If “Launch UiPath Studio” was checked, then UiPath Studio is launched.

To launch UiPath Studio manually, click **Start** , search for the “UiPath Studio” app, and click **Open**.

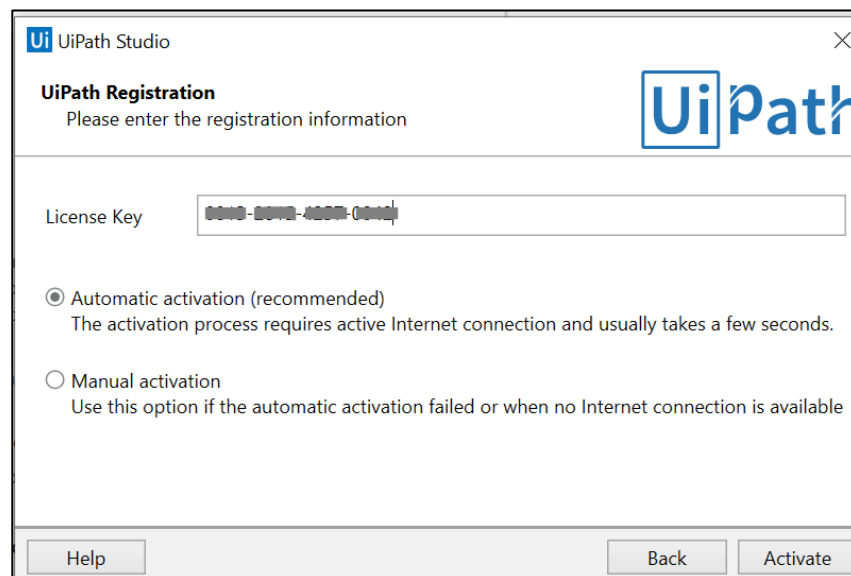


11. In the Welcome to UiPath Studio window, click **Activate Stand-Alone License**.



12. The UiPath Registration window is displayed.

- a. Enter the **License Key** you received by email.
- b. Select **Automatic activation**.
- c. Click **Activate**. Your UiPath license is now activated.



Now, you can start using UiPath software to create automation workflows.



